

Open Text Fax Server Connector for Microsoft Exchange

Create a Unified Fax and Email Solution with Open Text Fax Server, RightFax Edition

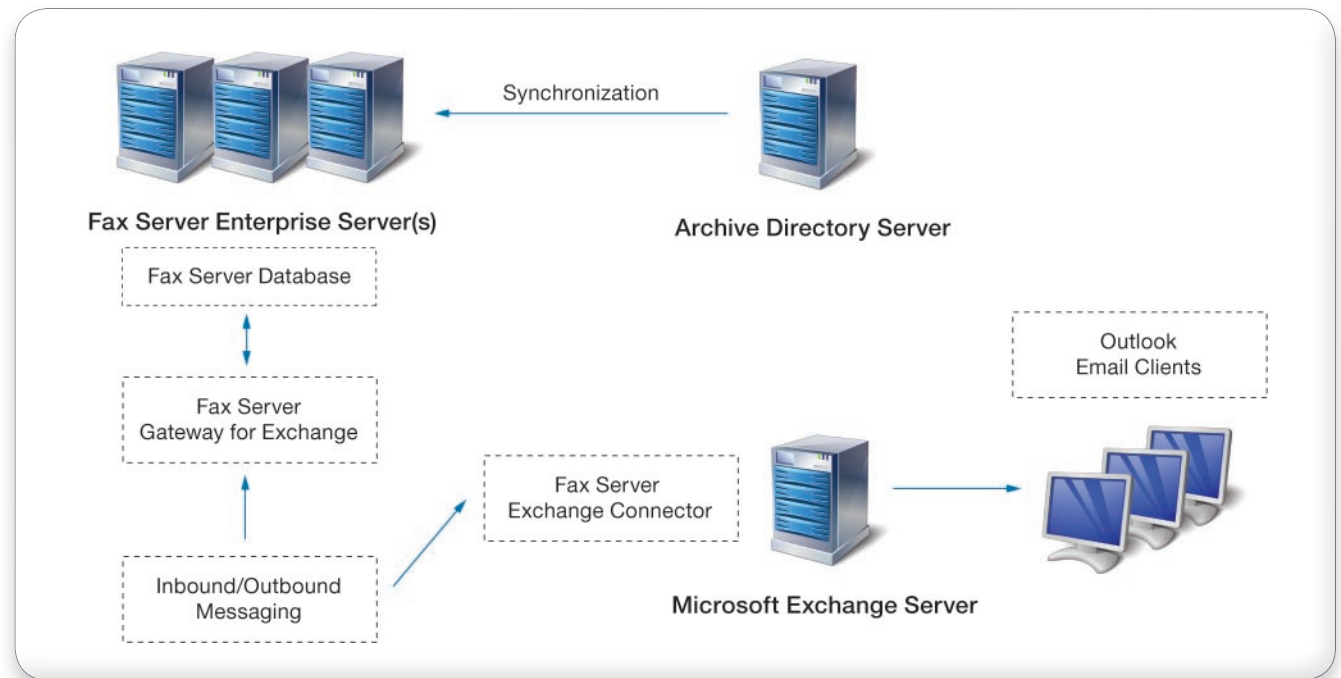
Overview

Open Text Fax Server, RightFax Edition provides all the tools needed to fax-enable desktop and business applications. The Open Text Fax Server Connector for Microsoft Exchange is an add-on to Fax Server, acting as a communication link between the Fax Server and Exchange Server.

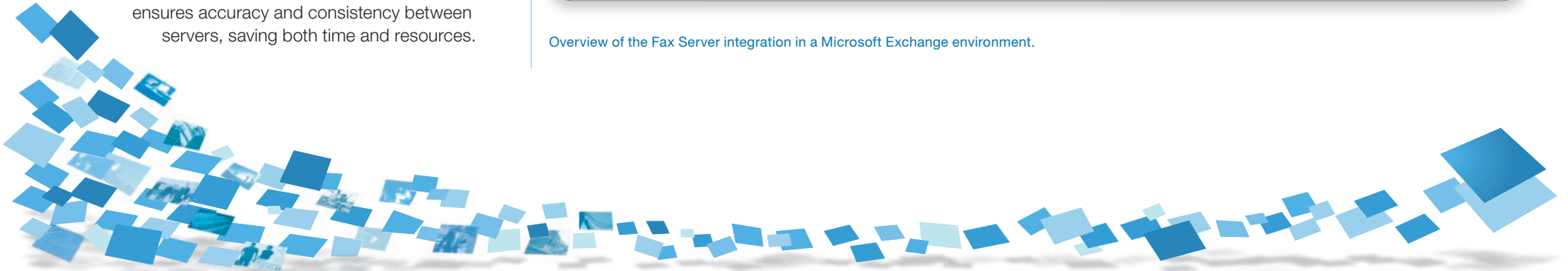
Connector for Microsoft Exchange allows users to conveniently send, receive and organize fax documents directly from Microsoft Outlook. Outbound email messages are picked up by Fax Server, converted into fax format and transmitted. Incoming faxes can be automatically routed to an individual or group email mailbox.

Fax Server and Active Directory databases can also be synchronized using Connector for Microsoft Exchange. This ensures that both Active Directory and Fax Server client information is consistently and correctly updated. With Connector for Microsoft Exchange, fully customizable Fax Server field mappings allow administrators to perform all user maintenance from Windows. Users created or modified in Active Directory are automatically updated in Fax Server.

This not only simplifies user administration, but also ensures accuracy and consistency between servers, saving both time and resources.



Overview of the Fax Server integration in a Microsoft Exchange environment.



Features

- Create, send, receive, and manage faxes directly within Outlook; organize, forward, and respond to your faxes exactly the same as email messages
- Generate and send new faxes easily to one or more contact addresses in an Outlook Contacts folder; include both fax recipients and email recipients in the same form
- Administer your Fax Server and Exchange systems from a single source with automatic Microsoft Active Directory database synchronization
- Generate custom, automated notifications of sent and received faxes in Outlook
- Track inbound and outbound faxes with the Exchange Message Tracking Log
- Take advantage of automated redundancy and loadbalancing in multiserver environments
- Use encrypted and certified document delivery from Outlook (requires RightFax Enterprise Suite)
- Support multiple Fax Servers with a single Exchange Server

How it works

Send and Receive Faxes through Outlook

With Connector for Microsoft Exchange, users create fax messages directly in Outlook as they would create emails. Faxes can be addressed to one or more destinations automatically using the Outlook Contacts folder, or addressed manually using a simple dialog. The module includes forms that let the users customize cover sheets, add library documents, attach billing codes, and more.

When a user faxes a document from Outlook, the module delivers the document to Fax Server. Fax Server renders the document to a fax format, adds a cover sheet and/or any specified library documents then transmits the document across phone lines, Local Area Network (LAN), Wide Area Network (WAN) or the Internet.

Connector for Microsoft Exchange also automatically routes incoming faxes to the Outlook mailbox. Custom icons allow users to easily identify fax messages in their mailboxes. The fax image itself is saved in the user's mail message as a file attachment.

Eliminate Fax Duplication on your Exchange Server with Web Delivery

For organizations that use Connector for Microsoft Exchange to integrate fax and email functions, Fax Server offers a web delivery feature designed to off-load storage of large or highvolume fax images from the mail server.

Web delivery sends notifications of received faxes through email, but rather than attaching the actual fax image to the mail message, Fax Server attaches a hyperlink to the fax location on the server. The user simply clicks the link and is taken straight to the fax image. The Fax Server Web Access Module is required for this feature.



Take Advantage of Active Directory Synchronization

With Connector for Microsoft Exchange, synchronization between Fax Server and Active Directory links user accounts in Active Directory to corresponding user accounts in Fax Server. Modifications to any Windows user automatically apply to the linked user record in Fax Server. The network administrator can specify which user accounts should be synchronized, the interval between synchronization, and other conditions.

Requirements

- Open Text Fax Server, RightFax Edition with the optional Connector for Microsoft Exchange installed
- Exchange 2003 or later
- Windows client computers running Outlook 2003 or later
- Encrypted and certified delivery options require Open Text Fax Server SecureDocs Module or RightFax Enterprise Suite

<http://faxsolutions.OpenText.com>

Sales captaris.sales@opentext.com
+ 800 304 2727

Support support@opentext.com
+ 800 540 7292

www.opentext.com